

合中上合中上合工合乙四申上老四工申工上合中上合工

合ニ 四半上老四王 四合上合中王 中王上老四合上中王老  
 サ<sup>6</sup> - 了 サ<sup>11</sup> ヤ ヌ ク ヤ マ

ニ ヨ (サー コイ コイ)  
工 五 工 合 工 合 五 合 五 主 工 合 五 主 五 老 工 半 上 合 中 五 工 中

上老四工四合上合中上合王合云四申上老四工中工上合

中上合王合乙四中上老四中王中王上合中上合王合乙四中

四老下

<sup>5方</sup> 中一 <sup>16</sup> 第16号 <sup>100</sup> 第100号

[illegible]

1. 2. 3. 4. 5. 6. 7. 8. 9. 10. 11. 12. 13. 14. 15. 16. 17. 18. 19. 20. 21. 22. 23. 24. 25. 26. 27. 28. 29. 30. 31. 32. 33. 34. 35. 36. 37. 38. 39. 40. 41. 42. 43. 44. 45. 46. 47. 48. 49. 50. 51. 52. 53. 54. 55. 56. 57. 58. 59. 60. 61. 62. 63. 64. 65. 66. 67. 68. 69. 70. 71. 72. 73. 74. 75. 76. 77. 78. 79. 80. 81. 82. 83. 84. 85. 86. 87. 88. 89. 90. 91. 92. 93. 94. 95. 96. 97. 98. 99. 100.

サ一何<sup>な</sup>故<sup>ゆ</sup>なりん<sup>ん</sup>ぞ<sup>ぞ</sup>否<sup>い</sup>ん<sup>ん</sup>ぞ<sup>ぞ</sup>何<sup>な</sup>なりん<sup>ん</sup>ぞ<sup>ぞ</sup>轉<sup>ま</sup>ずん<sup>ん</sup>ぞ<sup>ぞ</sup>

すま なるが ぬ たし け  
すー 島な来 海ははるる 国は里 食ははるる

♩ = ♩  
3

# 中屋ツタ (唄・三線)

Intro

唄

三線

合中 上合中上合工合乙 四合上老四工中工 上合中上合工合乙

F/C C F/C C

編曲 = Bumpy 3L

A

上合中上老四合

ア サドヤヌ ク ヤー マ ニー ヨ (ハーイイイ) アンタラーサー

上合中工中工上老 四合上中工老工五 工合工合五合五工 工合五上五老工中

マ リー ドー シー ヨ マタハ リヌ ー アンタラーサー ヨ

上合中五中上老 四合四合上合中上 合工合乙四合上老 四合中工上合中上

C F/C C F/C C F/C C F/C C

Outro

合工合乙四合上老 四合四合 D.S.

四合中工上合中上 合工合乙四合上老 四

Art spiral

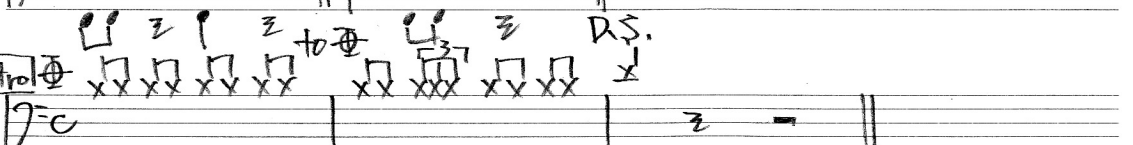
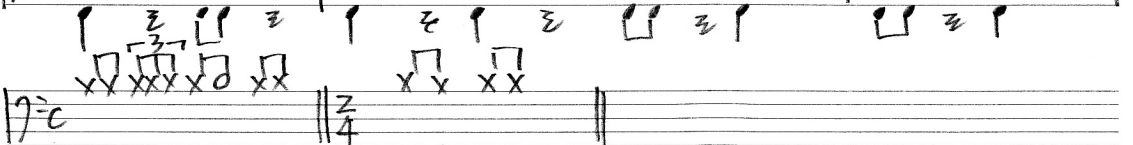
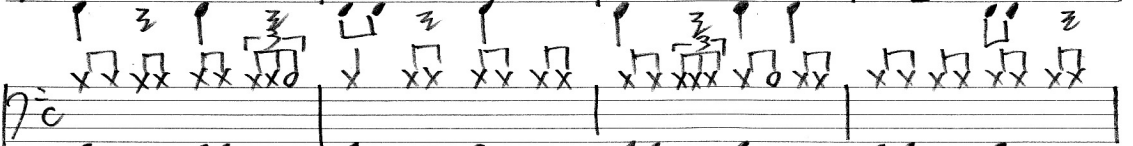
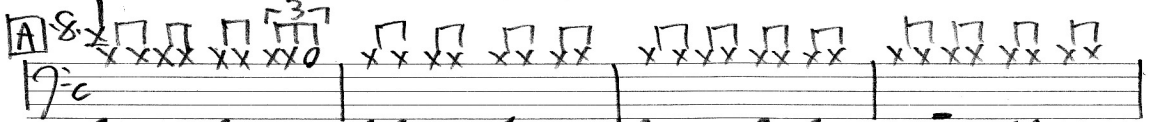
hit.

♪ = ♩  
L3-1

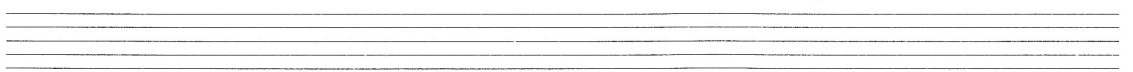
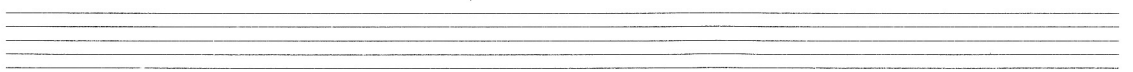
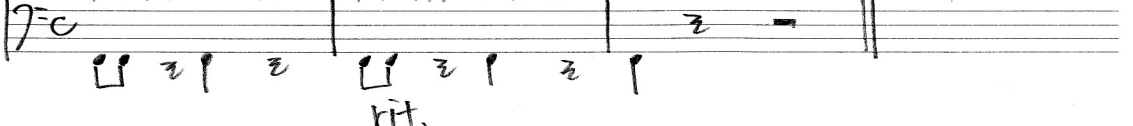
# 安里屋22タ (太鼓 井はドラム)

編曲 = Bumpy/BSL

Intro



Outro



$$\frac{1}{\sqrt{n}} \sum_{j=1}^n Z_j = O_p(1) \quad (A''-7)$$

編曲 = Bumpy 73L

$F/D \in F/C$

**[Intro]** F/c c to F/c c r.s.  
7<sup>c</sup> rit.

♩ = ♩<sub>4</sub>  
L3

安里屋22A (7/31)

Intro

編曲 = Bumpy 3L

Handwritten musical notation for the first system, featuring a treble and bass staff with a common time signature (C). The notation includes rests and some notes, with a '3' written below the first measure.

Handwritten musical notation for the second system, featuring a treble and bass staff with a common time signature (C). The notation includes rests and some notes, with a '3' written below the first measure.

Handwritten musical notation for the third system, featuring a treble and bass staff with a common time signature (C). The notation includes notes and rests, with a '3' written below the first measure.

Handwritten musical notation for the fourth system, featuring a treble and bass staff with a common time signature (C). The notation includes notes and rests, with a '3' written below the first measure.

Handwritten musical notation for the fifth system, featuring a treble and bass staff with a common time signature (C). The notation includes notes and rests, with a '3' written below the first measure.

Intro

Handwritten musical notation for the sixth system, featuring a treble and bass staff with a common time signature (C). The notation includes notes and rests, with a '3' written below the first measure.

♪ = ♩  
3

# 安里屋22タ (オルガン)

編曲 = Bumpy32

Intro

